

FluorVivo™ 300

Small Animal Fluorescence Imaging

A member of the FluorVivo family from  **INDEC BioSystems**



Summary

The *FluorVivo 300* is one of INDEC BioSystems' family of next generation *in vivo* imaging solutions. The Model 300 provides simple, fast, **real-time, whole body**, fluorescence *in vivo* imaging. The system brings powerful imaging and analysis capabilities to a broad range of laboratories, ranging from basic research to pre-clinical drug evaluation and screening.

FluorVivo is a personal instrument that complements your current fluorescence instruments and is available at a fraction of the cost of other *in vivo* imaging systems. FluorVivo's **modularity** means you can always elect to add useful options to the system to upgrade or adapt it to new experimental requirements. FluorVivo brings the power of *in vivo* imaging and analysis both to core facilities and the individual laboratory.

The Model 300 allows **three** alternative probes to be imaged, selectable from CFP and GFP out to ICG in the NIR (see the list overleaf). Switching between probes is simply accomplished via software setting and manually moving a slider. Choose the fluorophores you wish to use, and we will configure the Model 300 for optimum results.

Essential and Unique Features of the Model 300

- **Real time multicolor** imaging – images are in full color
- *In vivo* fluorescence imaging for your choice of three probes (see Table 1 below)
- When used for GFP, Model 300 is optimized for simultaneous imaging (in a single exposure) of all wavelengths from GFP through RFP
- **Live video imaging and recording** – perfect for fluorescence surgery applications
- Your choice of camera – choose between different image size, speed and sensitivity
- **Quantitative** – manual and automated analysis capabilities included
- A complete, **turn-key system** with the lowest cost of ownership on the market

Applications

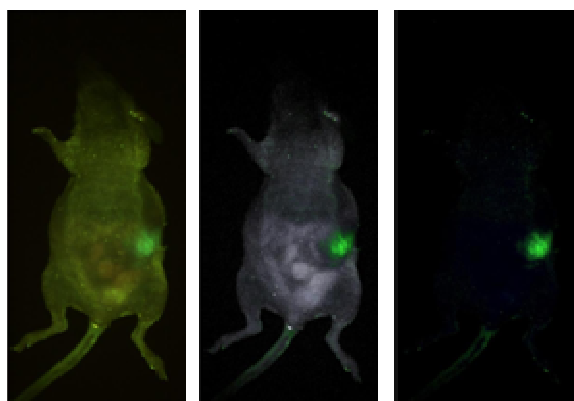
Applications include live animal screening, fluorescence-guided surgery, dynamic imaging, tumor growth, angiogenesis, stem cell research, and validation of animal models.

Powerful Yet Easy-to-Use Software

- Intuitive control of acquisition parameters
- Quantitative image analysis: spatial and intensity measurements, manual and automated
- Export images, measurements to standard formats
- Simple to learn, easy to use

The Advantages of FluorVivo

- Speed – Real-time imaging so fast that anesthesia is not required; each acquisition takes only a fraction of a second
- Spectral separation in real time – On-the-fly spectral separation can isolate and remove autofluorescent contributions to the image, permitting clearer visualization of fluorescent structures – *even while the chamber door is open* (see the image set below)
- Quantitative and time lapse imaging in real time
- Economy – new low price point, no maintenance cost
- Portable – pick it up by hand and move it
- Records video sequences directly to the computer's hard disk



Channel Name	Relevant Probes
Cyan	CFP
Green	GFP, Cy2™, Qdot® 525
Yellow	YFP
Amber	RFP, Cy3, Alexa Fluor® 555, 568, dsRed2, mCherry, Qdot 605, 625
Red	Texas Red, Alexa Fluor 594, Katushka/mKate, mCherry, mPlum, Qdot 655
Deep Red	Alexa Fluor 633, 635, Bodipy 630/650-x, Qdot 705
Ultra Red	Cy5, DDAO, Chlorin e6, Alexa Fluor 647
nIR-1	Cy5.5, IFP1.4, LI-COR IRDye® 680RD, Alexa Fluor 680, 700
nIR-2	Cy7, Alexa Fluor 750
nIR-3	ICG, LI-COR IRDye® 800CW

Table 1: Fluorescence_Channels

For further information, please contact INDEC BioSystems:

INDEC BioSystems
 4701 Patrick Henry Dr., Bldg. 24
 Santa Clara, CA 95054
 USA

Tel.: +1-408-986-1600
Fax: +1-408-986-1605
Email: sales@indecbiosystems.com
Web: www.indecbiosystems.com