

# Your **partner** in *in vivo* imaging solutions

INDEC BioSystems presents FluorVivo – the Next Generation of *in vivo* imaging solutions, from whole animal to single cell, in easy-to-use, modular formats.

## FluorVivo 100 – Single-Channel Imaging

- Real-time multicolor imaging
- From CFP/GFP to NIR and ICG
- Perfect for labs using single probes, or specific pairs such as GFP with RFP
- Sets a new price point for *in vivo* imaging systems
- Modular – upgrade to more advanced models as your needs evolve



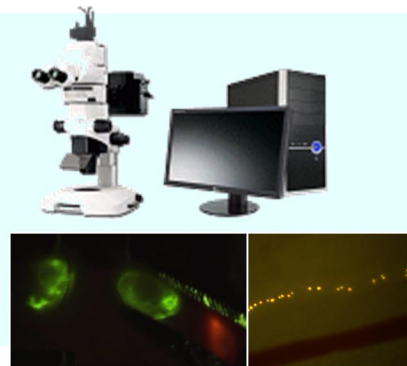
## FluorVivo 300 – Multichannel Imaging

- Three channels, user's choice
- Custom channels available
- Ideal for labs with multiple probes or probe development as a focus



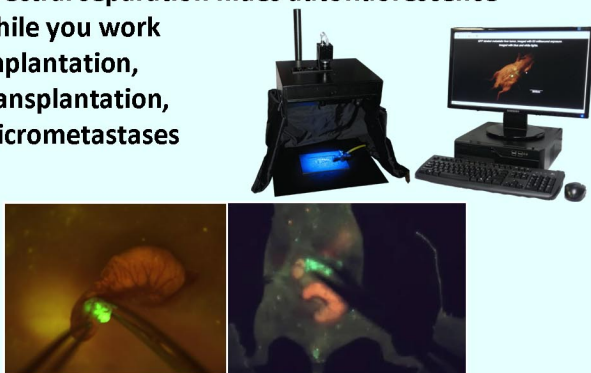
## FluorVivo Mag *in vivo* Microscope

- Ideal for study of cell biology *in vivo*
- Ideal for fluorescence-guided surgery
- Extravasation, metastasis, stem cells
- Combine with FluorVivo chamber for whole-animal-to-single cell imaging in a single system



## FluorVivo for Fluorescence-Guided Surgery

- Real-time imaging for surgeon's ease
- Spectral separation hides autofluorescence while you work
- Implantation, transplantation, micrometastases



## FluorVivo for Special Applications

- **FluorVivo for Cancer Research**  
Track tumor growth over time, with automatic time plots of fluorescence
- **FluorVivo for Stem Cell Research**  
Ideal for transplantation and implantation
- **FluorVivo for Screening**  
Rapid, anesthesia-free screening of animal models, cell lines and drug candidates
- **FluorVivo 1000**  
Supporting a full range of monochrome cameras

